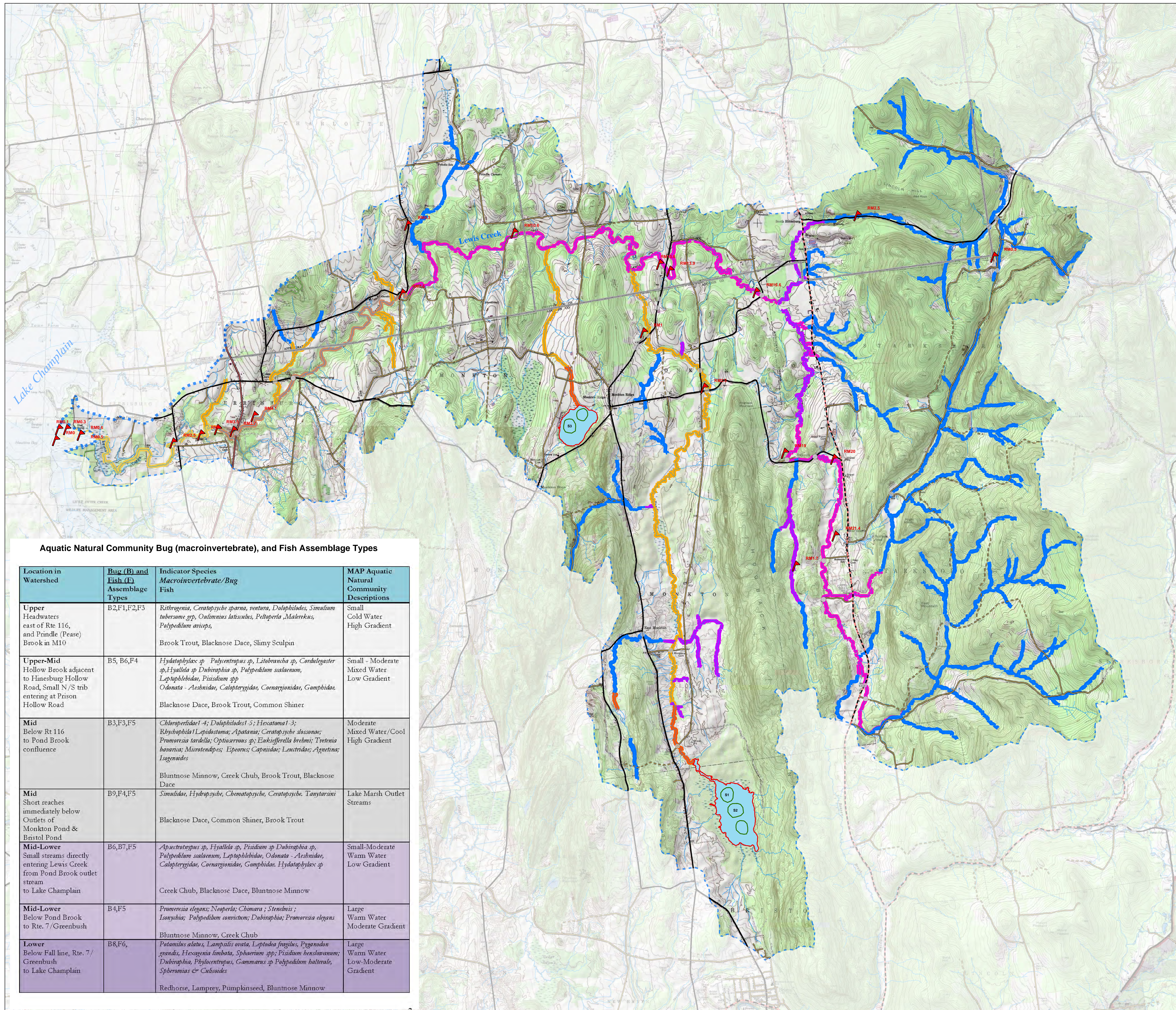


# Lewis Creek Watershed Aquatic Natural Communities



## Legend

- Biomonitoring Sites (with River Mile)
- Aquatic Natural Communities**
- ANC Description, Assemblage**
- Small Cold Water High Gradient, B2,F1,F2,F3
- Small-Moderate Mixed Water Low Gradient, B5,B6,F4
- Moderate Mixed Water/Cool High Gradient, B3,F3,F5
- Lake Marsh Outlet Stream Reaches, B9,F4,F5
- Small-Moderate Warm Water Low Gradient, B6,B7,F5
- Large Warm Water Moderate Gradient, B4,F5
- Large Warm Water Low-Moderate Gradient, B8,F6
- Bridges
- Forested - Hardwood, Softwood, Mixed

- Political Boundaries**
- County Boundary
  - Town Boundary

### Road Network

#### Road Class

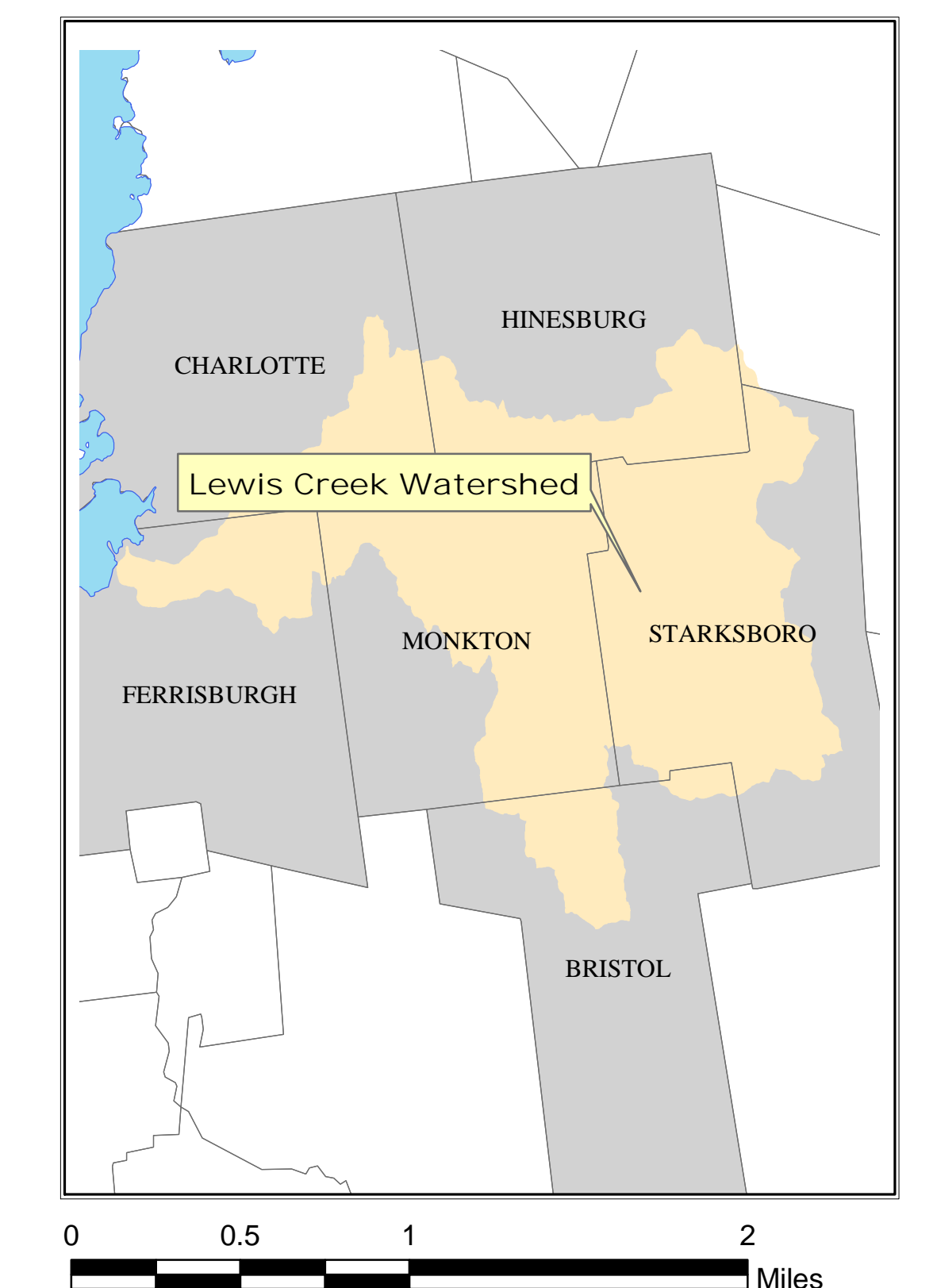
- US Highway
- State Route or Class 1
- Town Class 2
- Town Class 3
- Town Class 4
- Legal Trail
- Forest Rd
- Private Rd

#### Sources:

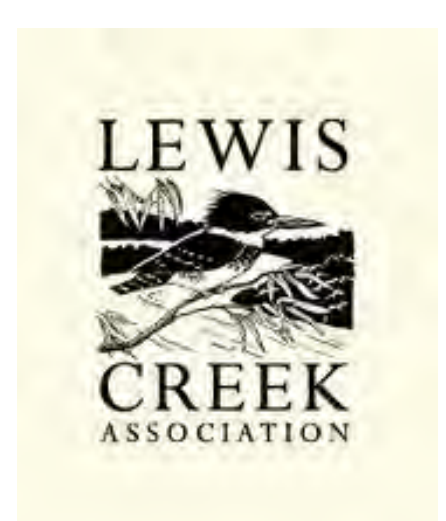
Biomonitoring Sites: VT ANR, 2011.  
 Aquatic Natural Communities: Overview of the occurrence of the aquatic natural communities within the Lewis Creek watershed. Fiske, Langdon; 2012; VT DEC and F&W  
 Forest Cover: NLCD 2006 (Class 41,42,43)

### Aquatic Natural Community Bug (macroinvertebrate), and Fish Assemblage Types

Location in Watershed	Bug (B) and Fish (F) Assemblage Types	Indicator Species Macroinvertebrate/Bug Fish	MAP Aquatic Natural Community Descriptions
Upper Headwaters east of Rte 116, and Prindle (Pease) Brook in M10	B2,F1,F2,F3	<i>Rithrogena</i> , <i>Ceratopsyche sparna</i> , <i>ventura</i> , <i>Dolophilodes</i> , <i>Simulium tuberosum</i> sp., <i>Oulimnius laticollis</i> , <i>Pelloperla</i> , <i>Malerekus</i> , <i>Polypedium avicaps</i> , Brook Trout, Blacknose Dace, Slimy Sculpin	Small Cold Water High Gradient
Upper-Mid Hollow Brook adjacent to Hinesburg Hollow Road, Small N/S trib entering at Prison Hollow Road	B5, B6,F4	<i>Hydatophylax</i> sp., <i>Polysentropus</i> sp., <i>Litobranchia</i> sp., <i>Cordulegaster</i> sp., <i>Hyallala</i> sp., <i>Dubiraphia</i> sp., <i>Polypedium scalanum</i> , <i>Leptophlebiidae</i> , <i>Pisidium</i> sp., <i>Odonata - Aeschnidae</i> , <i>Calopterygidae</i> , <i>Coenagrionidae</i> , <i>Gomphidae</i> . Blacknose Dace, Brook Trout, Common Shiner	Small - Moderate Mixed Water Low Gradient
Mid Below Rte 116 to Pond Brook confluence	B3,F3,F5	<i>Chironomidae 1-4</i> ; <i>Dolophilodes 1-5</i> ; <i>Hecatomia 1-3</i> ; <i>Rhyacophila</i> <i>Lepidostoma</i> ; <i>Apatania</i> ; <i>Ceratopsyche slossonae</i> ; <i>Promeris tardella</i> ; <i>Optiaerronus</i> sp.; <i>Eukiffarella brehmi</i> ; <i>Tvetenia banatica</i> ; <i>Microtendipes</i> ; <i>Epeorus</i> ; <i>Capniidae</i> ; <i>Leuctridae</i> ; <i>Agneta</i> ; <i>Loganoides</i> . Bluntnose Minnow, Creek Chub, Brook Trout, Blacknose Dace	Moderate Mixed Water/Cool High Gradient
Mid Short reaches immediately below Outlets of Monkton Pond & Bristol Pond	B9,F4,F5	<i>Simuliidae</i> , <i>Hydropsyche</i> , <i>Chenatopsyche</i> , <i>Ceratopsyche</i> , <i>Tanytarsini</i> . Blacknose Dace, Common Shiner, Brook Trout	Lake Marsh Outlet Streams
Mid-Lower Small streams directly entering Lewis Creek from Pond Brook outlet stream to Lake Champlain	B6,B7,F5	<i>Aspsectropus</i> sp., <i>Hyallala</i> sp., <i>Pisidium</i> sp., <i>Dubiraphia</i> sp., <i>Polypedium scalanum</i> , <i>Leptophlebiidae</i> , <i>Odonata - Aeschnidae</i> , <i>Calopterygidae</i> , <i>Coenagrionidae</i> , <i>Gomphidae</i> , <i>Hydatophylax</i> sp. Creek Chub, Blacknose Dace, Bluntnose Minnow	Small-Moderate Warm Water Low Gradient
Mid-Lower Below Pond Brook to Rte. 7/Greenbush	B4,F5	<i>Promeris elegans</i> ; <i>Neoperla</i> ; <i>Chimara</i> ; <i>Stenelmis</i> ; <i>Isoperla</i> ; <i>Polypedium convictum</i> ; <i>Dubiraphia</i> ; <i>Promeris elegans</i> . Bluntnose Minnow, Creek Chub	Large Warm Water Moderate Gradient
Lower Below Fall line, Rte. 7/Greenbush to Lake Champlain	B8,F6	<i>Potamius alatus</i> , <i>Lampis ovata</i> , <i>Leptodea fragilis</i> , <i>Pygnoton grandis</i> , <i>Hexagenia limbata</i> , <i>Sphaerium</i> spp.; <i>Pisidium benslowianum</i> ; <i>Dubiraphia</i> , <i>Phylocentropus</i> , <i>Gammarus</i> sp., <i>Polypedium baltense</i> , <i>Sphaerium</i> sp., <i>Culeoides</i> . Redhorse, Lamprey, Pumpkinseed, Bluntnose Minnow	Large Warm Water Low-Moderate Gradient



Lewis Creek Association research funded under the VT Agency of Natural Resources, Watershed Grant Program. This map is intended for planning purposes.



**Addison County REGIONAL PLANNING COMMISSION**