

# Lewis Creek Watershed

# MAP 1

## Landform-Level Ecosystem Classification Component Layers

### Major Landforms

- Champlain Valley
- Green Mountains

### Bedrock Geology

- Carbonate-rich (Dolomites)
- Somewhat Carbonate-rich
- Non-calcareous slates, etc.
- Non-calcareous schists, etc.
- Quartzite, non-calcareous (Cheshire)
- Quartzite, somewhat calcareous (Monkton)
- Sedimentary / mafic

### Aspect

- 1 Flat
- 0 North
- 45 Northeast
- 90 East
- 135 Southeast
- 180 South
- 225 Southwest
- 270 West
- 315 Northwest

### Elevation

- Less than 100 ft
- 100 - 500 feet
- 500 - 1,000 feet
- 1,000 - 1,500 feet
- 1,500 - 2,000 feet
- 2,000 - 2,500 feet

### Slope Classes

- 0 - 4 percent
- 4 - 9 percent
- 9 - 15 percent
- 15 - 25 percent
- over 25 percent

### Physiography

- Steep Slope
- Cliff
- Flat Summit or Ridgetop
- Slope Crest or Ridge; gentle steepness along ridge
- Slope Crest or Ridge; moderate steepness along ridge
- Slight Convexity; broad low
- Low Rounded Summit or Ridge
- Upper Sideslope or Rounded Ridge
- Flats
- Valley or Toe Slope; gentle grade
- Lower Sideslope or Gentle
- Flat in Valleys; usually water
- Bottom of Draw or Valley, Bench
- Slope of Cove or Draw
- Stream
- River
- Lake, Pond
- Wetland

### Ecological Soil Groups

- Clayey Lacustrine Soils
- Silty Lacustrine Soils
- Sand over Clayey/silty Deposits
- Droughty Sands
- Moist Sands
- Till Valley Soils, Limey
- Ablation Till Mountain Soils, Very Shallow
- Ablation Till Mountain Soils, Moderate to Deep
- Basal Till Mountain Soils
- River Floodplain Soils
- Miscellaneous Wet-Mesic Soils
- Miscellaneous Mesic Soils
- Hydric Mineral Soils, Valley
- Hydric Mineral Soils, Mountains
- Hydric Organic Soils
- Unclassed Soils

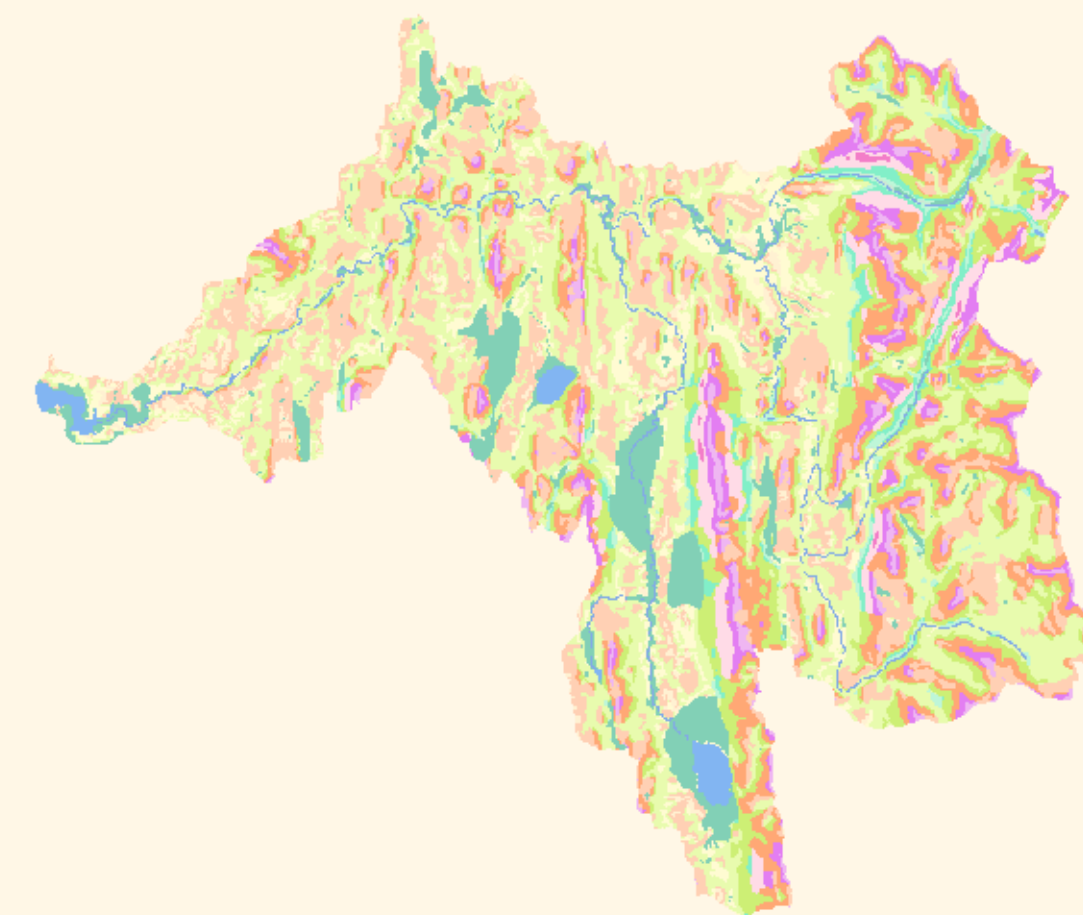
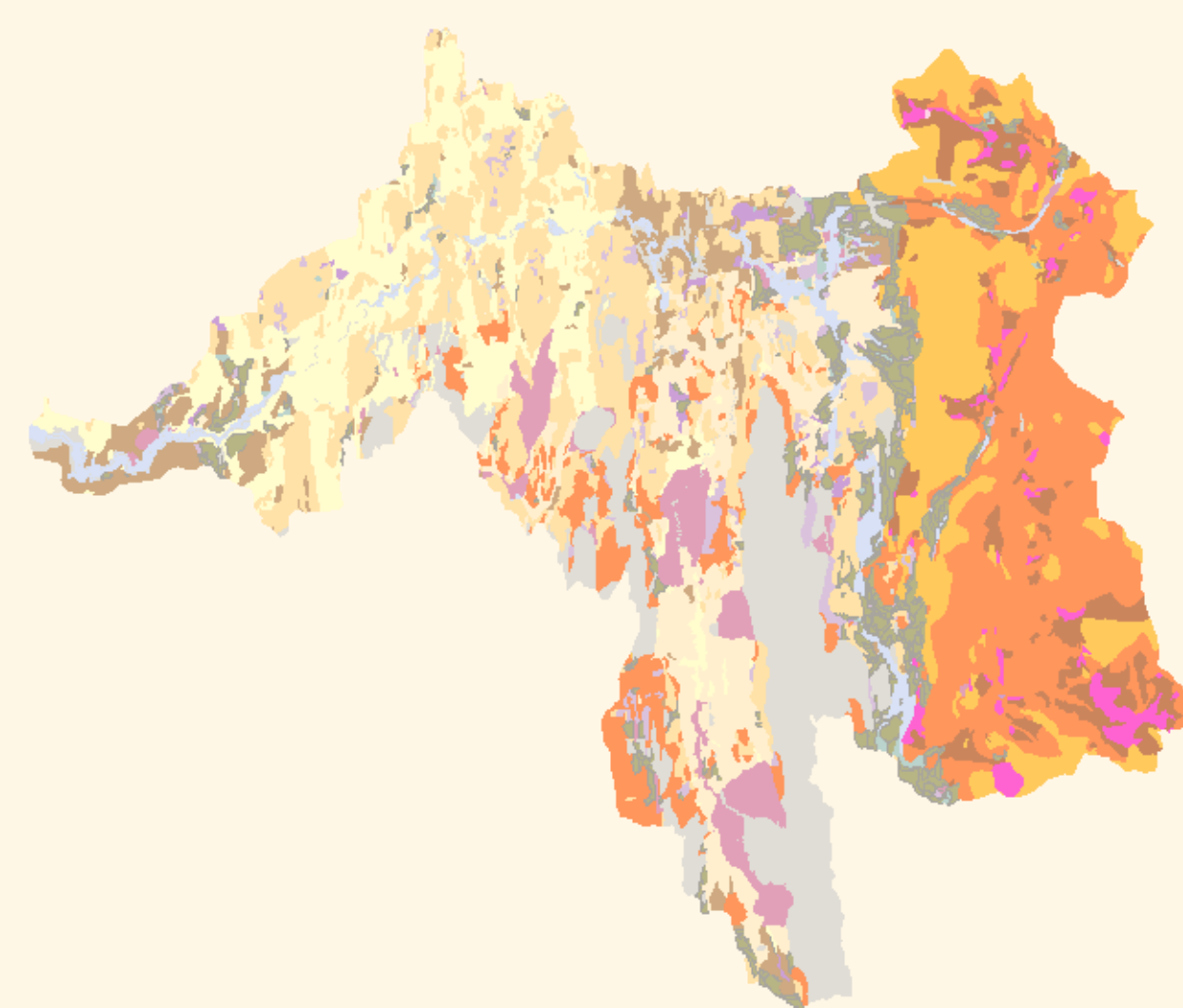
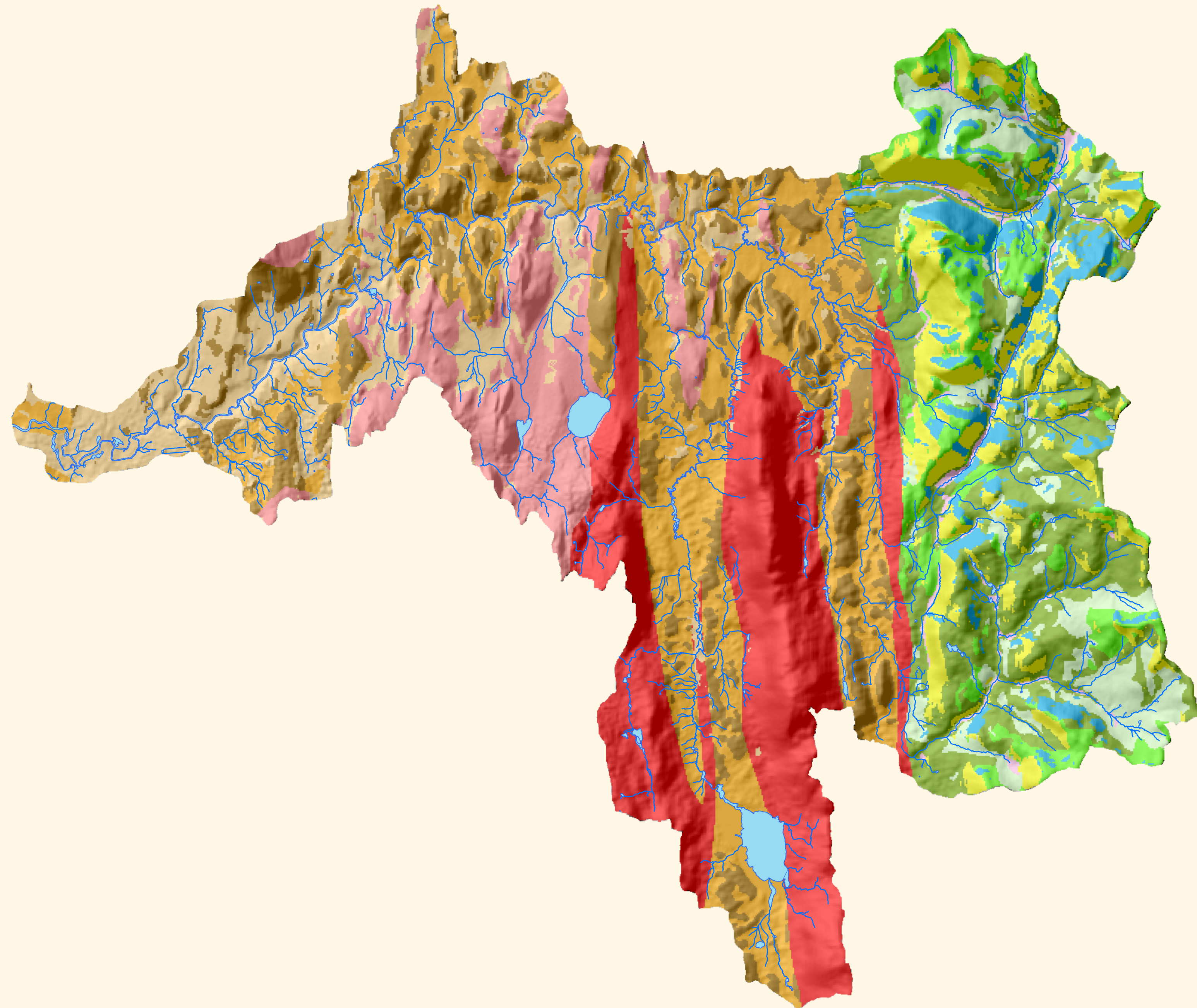
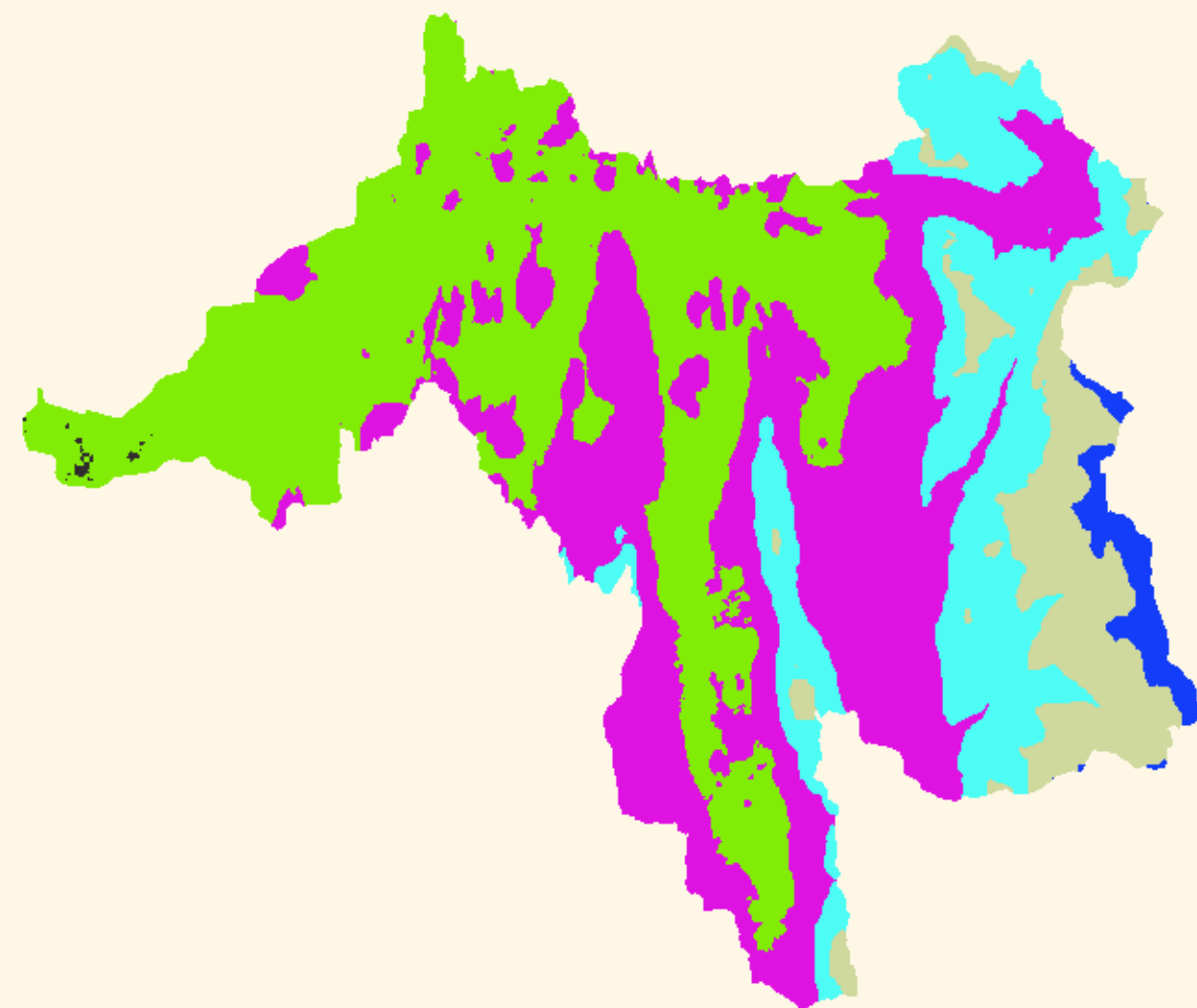
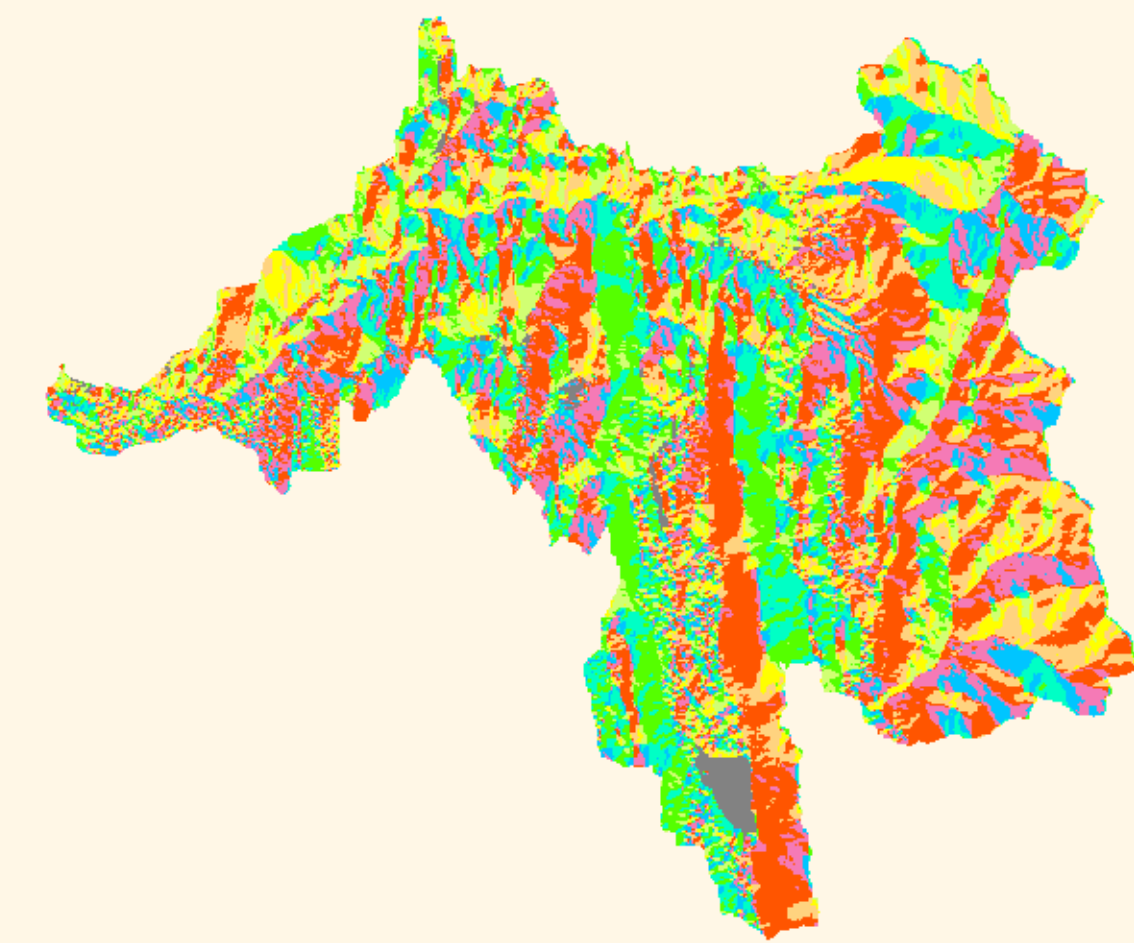
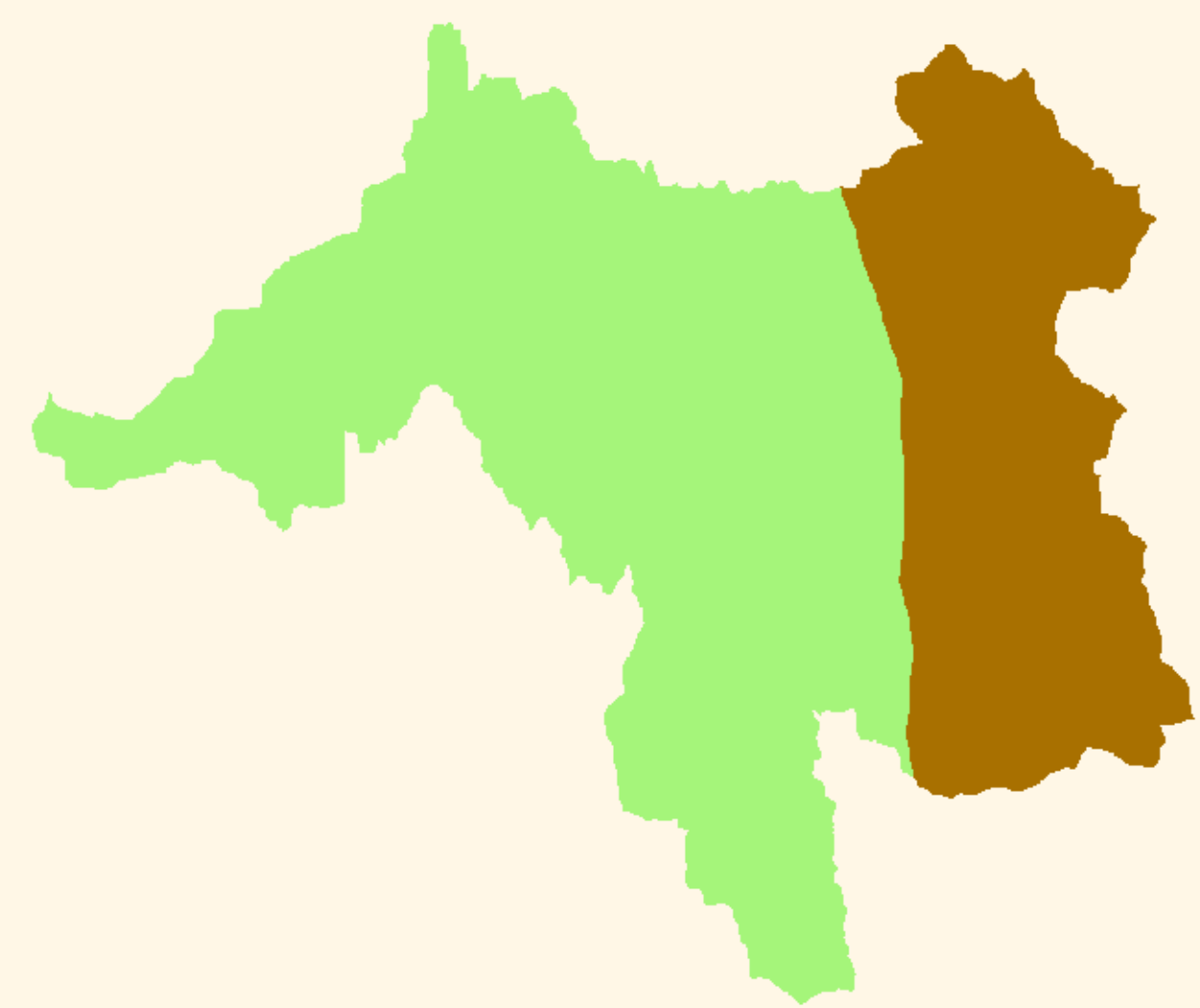
### Legend

#### Broad Valley Minor Landforms

- Cheshire Quartzite Hills
- Monkton Quartzite Hills
- Dolomite Hills
- Dolomite Valley
- Lacustrine Plain

#### Western Green Mountain Minor Landforms

- Basal Till Flats to Mod Slopes
- Ablation Till Flats to Mod Slopes, Shallow Soil
- Ablation Till Flats to Mod Slopes, Deep Soil
- Steep North and East Slopes
- Steep South and West Slopes
- Hollows



Classification methodology developed by:

Marc Lapin, Ecosystem Science and Conservation  
Brett Engstrom, Consulting Ecologist

0 0.5 1 2 3 4 Miles

